

**GLENMEDE**  
Investment Management

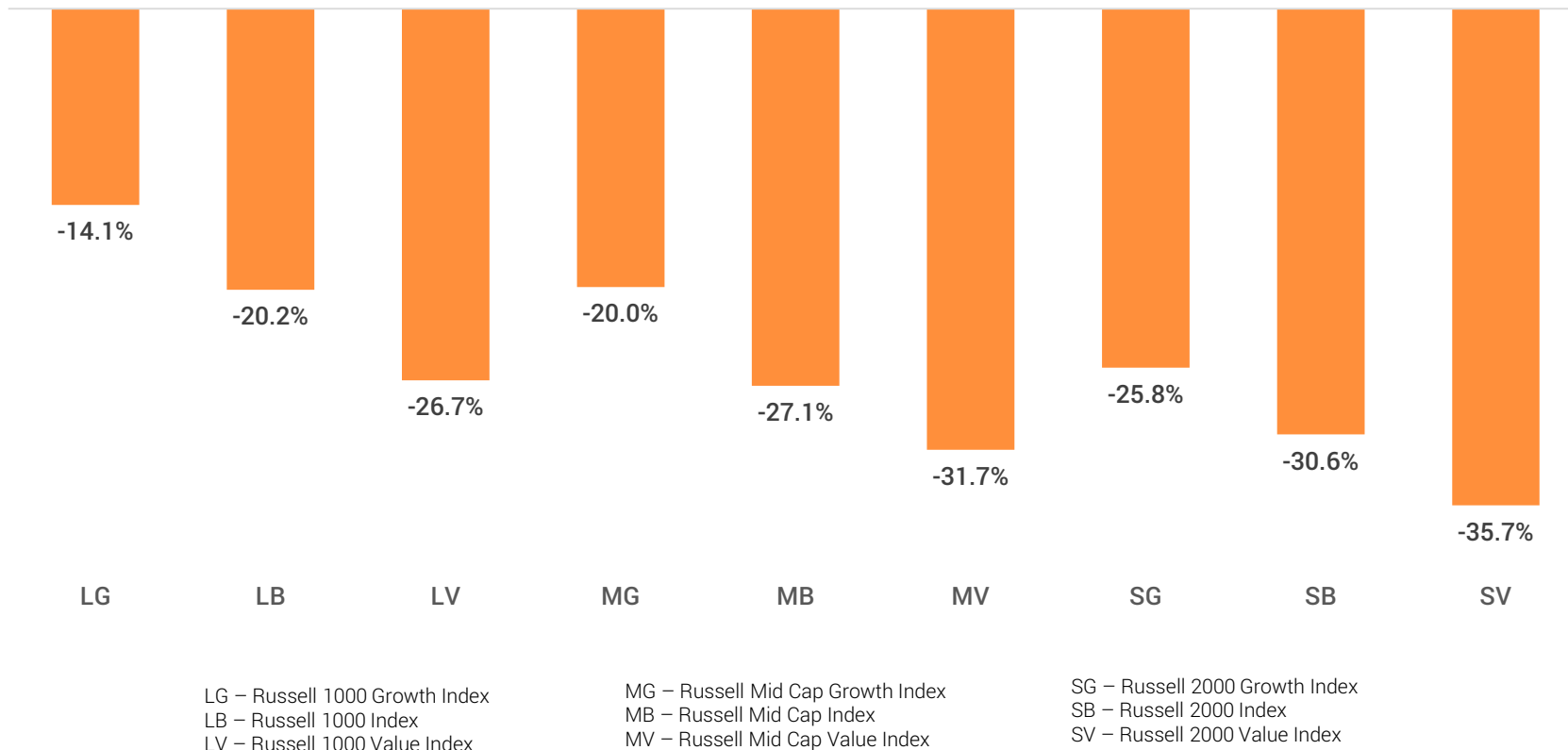
Glenmede Small Cap Equity  
**First Quarter 2020 Review**



**Jordan L. Irving**  
Portfolio Manager

# Equity market review: Russell Index style performance – Growth outperformed Value, Large outperformed Small

## First Quarter 2020



Source: FactSet

All information is as of 3/31/2020, unless otherwise noted, and is subject to change. Investing involves risk. The views expressed represent the opinions of GIM's portfolio managers. In addition, the views are not intended as a recommendation of any sector or product. Past performance is not indicative of future performance. You cannot invest directly in an Index. See Additional Disclosures at the end of this document. For Institutional Investor Use Only

# Worst quarter in history of Russell 2000 Index

## Summary performance (%)

As of March 31, 2020

	1Q20 (%)	4Q19 (%)
Glenmede Small Cap Equity (gross)	-35.1	10.5
Glenmede Small Cap Equity (net)	-35.2	10.2
Russell 2000 Index	-30.6	9.9
Excess return (gross)	<b>-4.5</b>	<b>0.6</b>

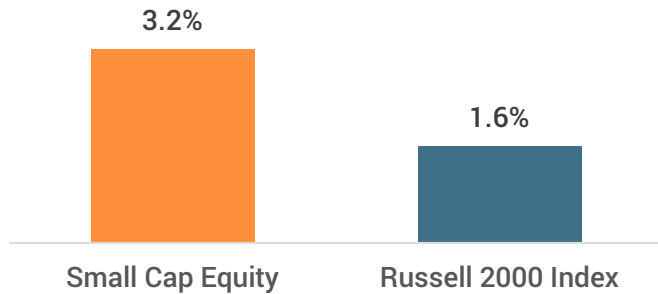
Source: FactSet. Returns shown are gross of fees.

All data as of 3/31/2020, unless otherwise noted. **This represents past performance which is not indicative of future results.** As with all investments, loss is possible.

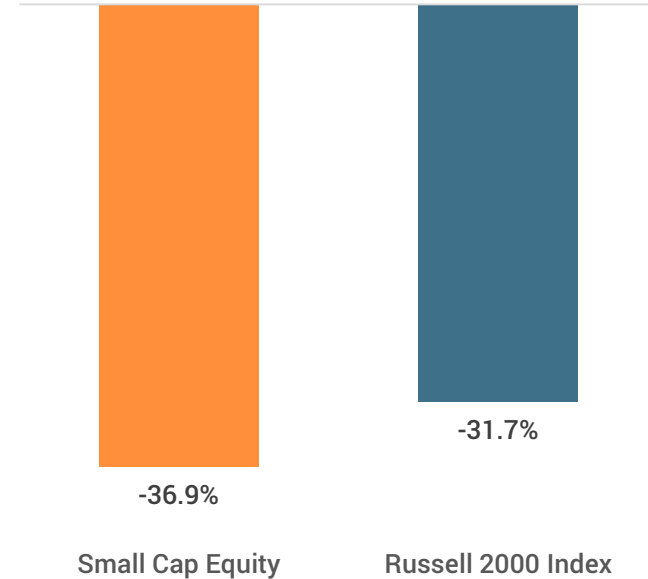
See Additional Disclosures at the end of this document. For Institutional Investor Use Only.

# Strategy Performance: A tale of two markets

**First Quarter through  
Small Cap Market Peak**  
1/1/2020 – 2/19/2020



**Small Cap Market Peak  
through Quarter-End**  
2/19/2020 – 3/31/2020



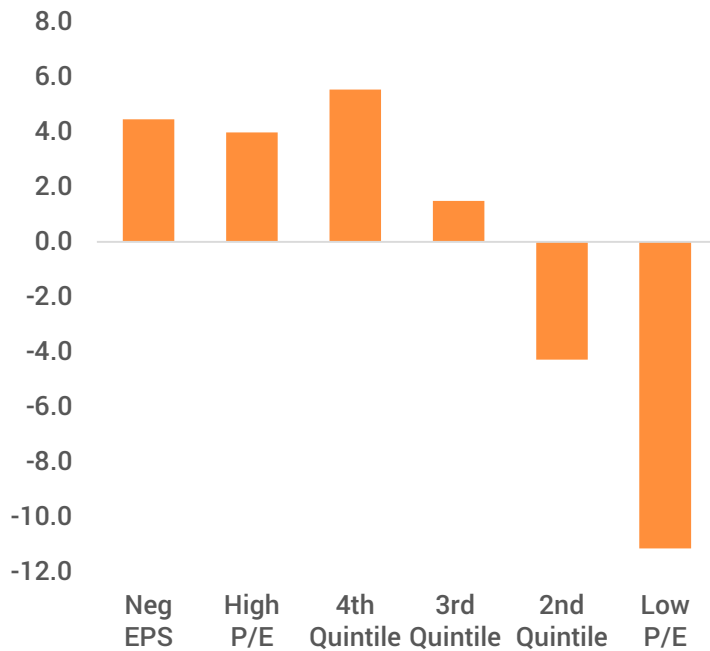
Source: Glenmede Investment Management LP, FactSet

All information is as of 3/31/2020, unless otherwise noted, and is subject to change. The views expressed represent the opinions of GIM's portfolio managers. Past performance is not indicative of future results. Investing involves risk and as with all investments, loss is possible. You cannot invest directly in an index. See Additional Disclosures at the end of this document. For Institutional Investor Use Only

# Highly valued loss makers drove Russell 2000 Index

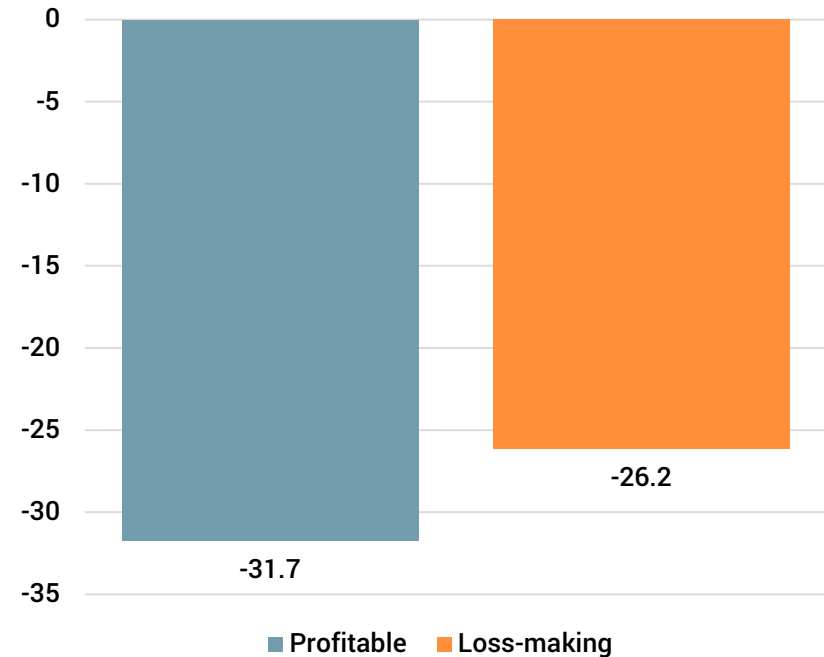
## Returns Relative to the Russell 2000 Index

December 31, 2019 - March 31, 2020



## Russell 2000 Index Stock Returns

December 31, 2019 - March 31, 2020



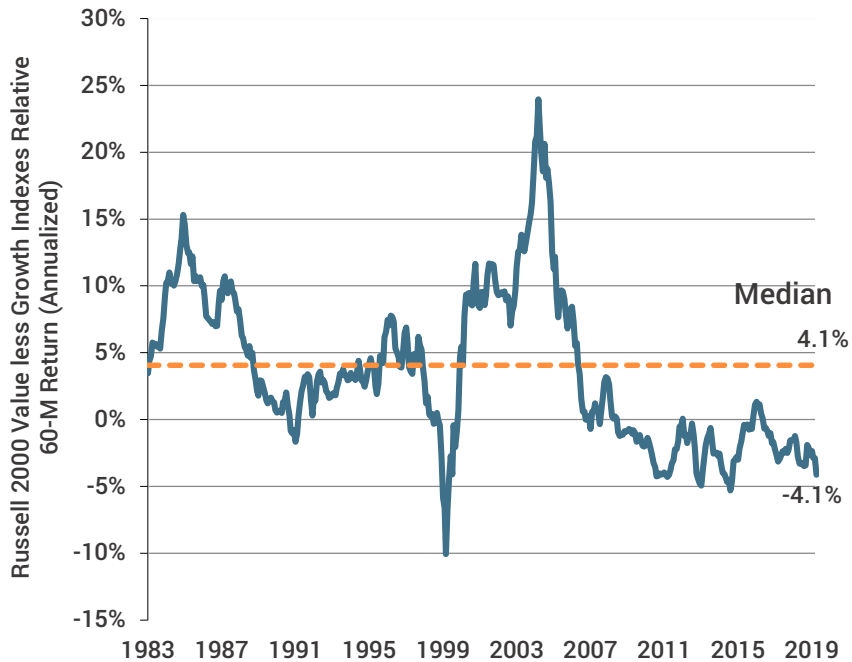
Sources: FactSet and Glenmede Investment Management LP

All data as of 3/31/2020, unless otherwise noted. The views expressed represent the opinions of the portfolio managers. There can be no assurance that the same factors would result in the same decisions being made in the future. Past performance is not indicative of future performance. For Institutional Investor Use Only.

# Growth stocks have led the current market cycle

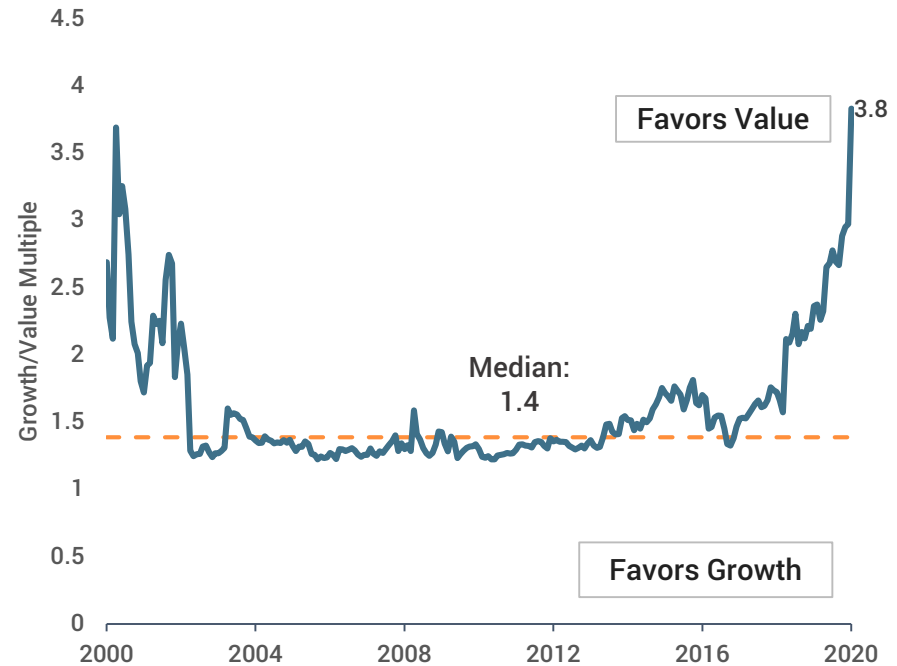
## Small Cap Value and Growth Stocks

Relative 60-Month Total Returns (Annualized)  
December 31, 1978 through March 31, 2020



## P/E FWD 4Q - Relative Multiple

Russell 2000 Value vs. Russell 2000 Growth  
As of March 31, 2020

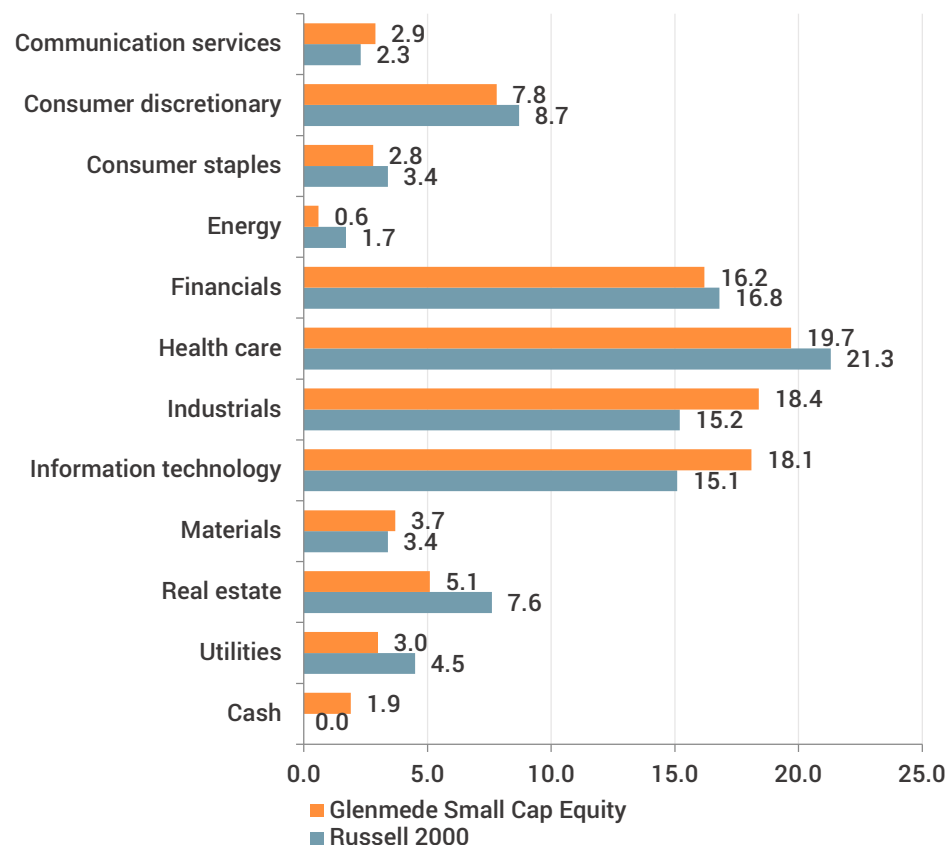


Sources: FactSet and Glenmede Investment Management LP

All data as of 3/31/2020, unless otherwise noted. The views expressed represent the opinions of the portfolio managers. There can be no assurance that the same factors would result in the same decisions being made in the future. Past performance is not indicative of future performance. For Institutional Investor Use Only.

# Portfolio details

## Sector group diversification (%)



Source: FactSet

All data as of 3/31/2020, unless otherwise noted. **This represents past performance which is not indicative of future results.** Securities mentioned are for informational purposes only and do not represent a recommendation or an offer to buy, hold or sell any securities, or all of the securities held in client portfolios. As with all investments, loss is possible. See Additional Disclosures at the end of this document. For Institutional Investor Use Only.

## Top ten holdings

## % Weight

CACI International Inc Class A	2.0
Ciena Corporation	1.9
Western Alliance Bancorp	1.8
Horizon Therapeutics Public Limited Company	1.8
Rexnord Corporation	1.8
CommVault Systems, Inc.	1.8
Entegris, Inc.	1.7
Verint Systems Inc.	1.7
Diodes Incorporated	1.6
J2 Global, Inc.	1.6
<b>Total</b>	<b>17.7</b>

## Market cap distribution

## Glenmede Small Cap %

## Russell 2000 %

>\$3.0 B	26.7	22.4
\$1.5 B – \$3.0 B	45.3	32.7
\$500 M – \$1.5 B	26.9	32.5
< \$500 M	1.0	12.5

# Characteristics aligned with strategy objective

	Small Cap Equity	Russell 2000
Price/Earnings (NTM)	11.7	26.4
FY2/FY1 Earnings Growth (%)	10.5	14.0
PEG Ratio	1.1	1.9
Return on Equity (%)	9.3	4.9
Price/Book	1.3	1.4
Dividend Yield (%)	1.7	2.0
Weighted Average Market Cap (mil)	\$2,418	\$2,045

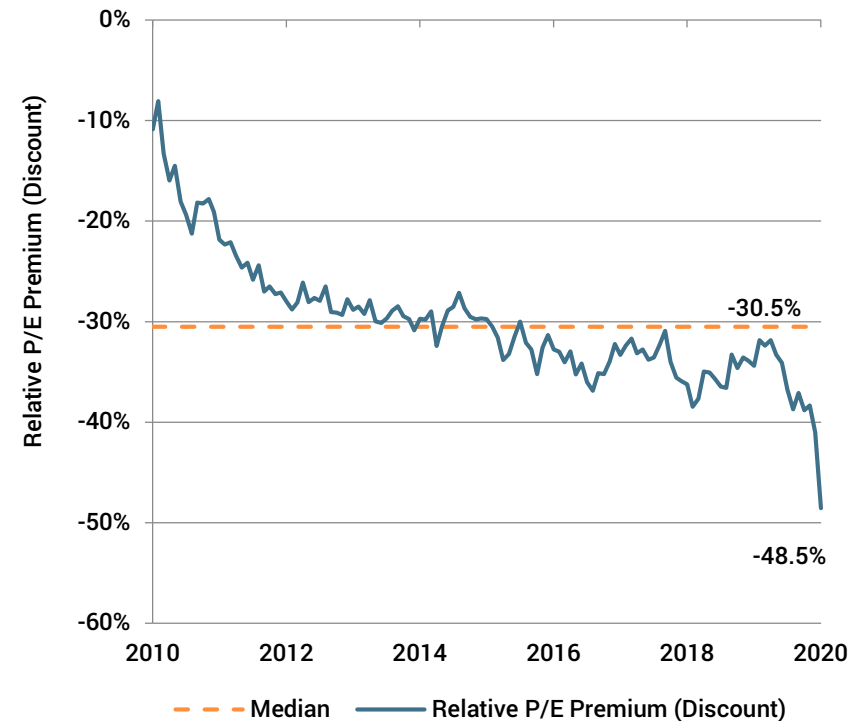
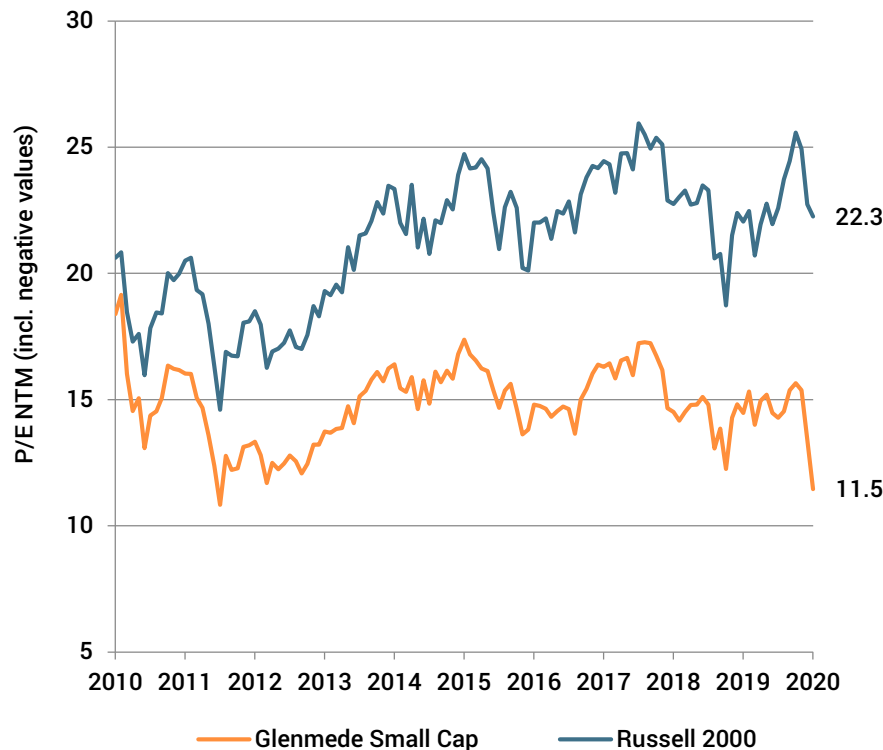
Source: FactSet

All data as of 3/31/2020, unless otherwise noted. **This represents past performance which is not indicative of future results.** As with all investments, loss is possible. See Additional Disclosures at the end of this document. For Institutional Investor Use Only.



# Strategy at historic relative lows

### Small Cap Equity vs. Russell 2000 Index P/E NTM (incl neg values)



Sources: FactSet and Glenmede Investment Management LP

All data as of 3/31/2020, unless otherwise noted. The views expressed represent the opinions of the portfolio managers. There can be no assurance that the same factors would result in the same decisions being made in the future. Past performance is not indicative of future performance. For Institutional Investor Use Only.

# Team contacts

## Platforms and Sub-Advisory

**Jeffrey W. Coron, CIMA**  
**Director of Institutional and Intermediary Distribution**  
Direct: 215-419-6627  
Email: jeffrey.coron@glenmede.com

## Institutions and Consultants

**Samantha Lowry**  
**Director of Institutional Markets**  
Direct: 215-419-6741  
Email: samantha.lowry@glenmede.com

## Client service

**Kent E. Weaver, CFA**  
**Director of Client Service**  
Direct: 215-419-6687  
Email: kent.weaver@glenmede.com

## Advisors

*Northeast*  
**Michael Goold, CIMA**  
**Business Development Officer**  
Direct: 215-419-6903  
Email: michael.goold@glenmede.com

*Southeast and Midwest*  
**Jason Laird**  
**Business Development Officer**  
Direct: 215-419-6902  
Email: jason.laird@glenmede.com

*West and Southwest*  
**Kevin Heckman, CFA**  
**Business Development Officer**  
Direct: 215-419-6193  
Email: kevin.heckman@glenmede.com

**Jarrett Naiden**  
**Business Development Associate**  
Direct: 215-419-6793  
Email: jarrett.naiden@glenmede.com



Additional  
information

# Composite Performance Presentation

## Small Cap Equity Composite

April 1, 1991 through December 31, 2019

Period	Returns Gross of Fees (%)	Returns Net of Fees (%)	Russell 2000 Index (%)	Composite 3YR Std Deviation	Russell 2000 3YR Std Deviation	Number of Accounts	Composite Market Value (\$millions)	Total Firm Market Value (\$millions)	Percentage of Firm Assets	Internal Std Deviation (%)
2019 Year	22.20	21.01	25.53	17.0%	15.7%	24	2,188	15,063	15%	0.12
2018 Year	(15.08)	(15.93)	(11.01)	16.4%	15.8%	37	2,713	14,589	19%	0.14
2017 Year	16.79	15.64	14.65	14.0%	13.9%	42	3,731	17,598	21%	0.05
2016 Year	19.16	17.99	21.31	15.7%	15.8%	26	3,063	14,642	21%	0.04
2015 Year	(2.06)	(3.03)	(4.41)	14.5%	14.0%	14	2,398	13,053	18%	0.04
2014 Year	4.00	2.98	4.90	13.3%	13.1%	12	1,855	9,753	19%	0.01
2013 Year	49.23	47.80	38.82	16.9%	16.4%	10	1,033	7,147	14%	0.06
2012 Year	17.79	16.64	16.35	20.3%	20.2%	<5	420	5,929	7%	N/A
2011 Year	1.02	0.01	(4.18)	25.1%	25.0%	<5	261	5,243	5%	N/A
2010 Year	28.54	27.29	26.85			<5	180	4,992	4%	N/A

Annualized Performance - Period Ending December 31, 2019			
Period	Return (%) Gross of Fees	Return (%) Net of Fees	Russell 2000 Index (%)
1 Year	22.20	21.01	25.53
3 Year	6.62	5.57	8.59
5 Year	7.18	6.12	8.23
10 Year	12.88	11.77	11.83
Since Inception	11.09	10.25	9.76

### Separate Account Fee Schedule:

First \$20 million	1.00% on market value
Next \$30 million	0.80% on market value
Thereafter	0.70% on market value

### Past performance is not indicative of future performance.

Glenmede Investment Management, LP (the "Firm" or GIM) claims compliance with the Global Investment Performance Standards (GIPS®) and has prepared and presented this report in compliance with the GIPS standards. Glenmede Investment Management, LP has been independently verified for the period of 01/01/1993 to 06/30/2019. The verification reports are available upon request. Verification assesses whether (1) the firm has complied with all the composite construction requirements of the GIPS standards on a firm-wide basis and (2) the firm's policies and procedures are designed to calculate and present performance in compliance with the GIPS standards. Verification does not ensure the accuracy of any specific composite presentation.

Glenmede Investment Management, LP, a registered Investment Advisor, is an affiliate of the Glenmede Trust Company, NA (GTC). Effective January 1, 2007, the Investment Product Management Group of GTC became Glenmede Investment Management, LP. All performance prior to January 1, 2007, shown here as the performance of GIM, was previously reported as the performance of the Investment Product Management Group of the Glenmede Trust Company. "Firm" assets are defined as all assets managed by the Glenmede Investment Management, LP. All returns are calculated in US Dollars. A complete list of firm composites and performance is available upon request.

The Small Cap Equity Composite objective is to provide maximum long-term total return consistent with reasonable risk to principal, by investing primarily in common stocks with market capitalization at the time of purchase less than the maximum capitalization permitted for a stock in the Russell 2000 Index.

# Composite Performance Presentation

## Small Cap Equity Composite

The composite was created on 05/01/2000 and has an inception date of 04/01/1991. The composite is comprised of all the Glenmede Investment Management, LP Small Cap non-restricted, discretionary and actively managed accounts over \$1 million. Prior to 01/01/2013, the minimum market value was \$5 million. Accounts are included in the composite beginning with the first full month of performance through the last full month of performance. Prior to 04/01/2017, accounts were included with the first full quarter of performance. Accounts falling below the minimum or experiencing net cash flows of 30% or greater of beginning market value are excluded from the composite for that month. Performance results are calculated on a total return basis and include all realized and unrealized capital gains and losses as well as dividends and interest. Portfolios in the composite presented record transactions based on trade date. Portfolio performance calculations are time-weighted to account for periodic contributions and withdrawals. Composite returns consist of size-weighted portfolio returns using beginning of period values to weight portfolio returns. Monthly linking of interim performance results is used to calculate year-to-date and annual returns. All of the composite's valuations and returns are computed and stated in U.S. Dollars. Additional information regarding the Firm's policies for valuing portfolios, calculating performance and preparing compliant presentations, is available upon request. The gross of fee returns reflect composite performance results that include transaction costs. Net of fee returns reflect composite performance results that have been adjusted to reflect a deduction for investment management fees at the highest model rate of 1.00% reflected on the performance presentation.

Internal Standard Deviation measures the consistency of a composite's performance results with respect to the individual portfolio returns within that composite. The dispersion of the gross returns of each composite is calculated by the asset-weighted deviation method. Only portfolios that have been managed for the full period have been included in the presented dispersion calculations of each composite. For periods with five or fewer portfolios, disclosure of dispersion and the number of accounts is not presented. The three-year annualized ex-post standard deviation measures the variability of the gross composite and index returns over the preceding 36-month period.

The Russell 2000 Index is an unmanaged, market value weighted index, which measures performance of the 2,000 companies that are between the 1,000th and 3,000th largest in the market. One cannot invest directly in an index.

# Disclosures

## **Past performance is not indicative of future results.**

All materials presented herewith are illustrative and for discussion purposes with professional or sophisticated investors. This information contains confidential and proprietary information of Glenmede Investment Management, LP ("GIM") and should be shared only with those persons assisting a prospect or investor with the selection of managers or investment strategies who agree to keep it confidential. This document should not be circulated to anyone else without the expressed approval of GIM.

Nothing in this document alters the terms and conditions of the relationship between GIM and its client, which are governed by the Investment Management Agreement or other similar documentation. It is not a specific offer of services.

This document has no regard to the specific investment objectives, financial situation or particular needs of any recipient and is not a solicitation or offer to buy or sell securities. Though all factual information herein was gathered in good faith and is believed to be accurate, no representation or warranty is provided in relation to the accuracy or reliability, nor is this document intended to be a complete statement or summary of the markets, securities, risks or developments referred to. This material should not be regarded by recipients as a substitute for the exercise of their own judgement. Opinions or objectives expressed herein are the current opinions or objectives as of the dates indicated, and may differ from those expressed by other persons or business units affiliated with GIM, which may use different assumptions or criteria. GIM is under no obligation to update opinions as they change.

References to the manager's investment process and objectives, including but not limited to investment screens, portfolio constraints and risk control are intended to provide the recipient with an idea of the portfolio manager's goals. There is not a guarantee of such goals will not be changed, or that the current goals can be achieved. No investment is without risk.

All performance results reported are historical. PAST PERFORMANCE IS NOT INDICATIVE OF FUTURE RESULTS. Unless otherwise indicated, performance numbers included herein are reported gross of management fees. You will be charged management fees and management and other fees reduce returns. To see the performance of the relevant composite net of a standardized set of fees, see the GIPS Compliant Presentation on the prior page. Performance of individual accounts during the indicated period may be lower or higher than the performance in the composite.

Price to Earnings (P/E): ratio of stock price to earnings. 3-Year EPS Growth: historical earnings per share growth over the last 3 years. Return on Equity (ROE): net income divided by equity. Free Cash Flow Yield: an indicator that compares free cash flow and market cap. It is a representation of the income (free cash flow) created by an investment. A yield of 12 percent means that a company is generating 12 percent of its Market Capitalization in free cash flow yearly. Dividend Yield: a dividend expressed as a percentage of a current share price.

# Team contacts

## Platforms and Sub-Advisory

**Jeffrey W. Coron, CIMA**  
**Director of Institutional and Intermediary Distribution**  
Direct: 215-419-6627  
Email: jeffrey.coron@glenmede.com

## Institutions and Consultants

**Samantha Lowry**  
**Director of Institutional Markets**  
Direct: 215-419-6741  
Email: samantha.lowry@glenmede.com

## Client service

**Kent E. Weaver, CFA**  
**Director of Client Service**  
Direct: 215-419-6687  
Email: kent.weaver@glenmede.com

## Advisors

*Northeast*  
**Michael Goold, CIMA**  
**Business Development Officer**  
Direct: 215-419-6903  
Email: michael.goold@glenmede.com

*Southeast and Midwest*  
**Jason Laird**  
**Business Development Officer**  
Direct: 215-419-6902  
Email: jason.laird@glenmede.com

*West and Southwest*  
**Kevin Heckman, CFA**  
**Business Development Officer**  
Direct: 215-419-6193  
Email: kevin.heckman@glenmede.com

**Jarrett Naiden**  
**Business Development Associate**  
Direct: 215-419-6793  
Email: jarrett.naiden@glenmede.com